

2018 **TACOMA**



TOYOTA

POWERFUL IN EVERY WAY POSSIBLE

STYLE, MUSCLE, PERFORMANCE.
CHECK, CHECK AND CHECK.

From serious payloads to serious adventure, the 2018 Tacoma is ready whenever you are. Because this is not a truck to be taken lightly. It's a piece of serious engineering, built to take everything you and the world can throw at it, and still come back for more. With muscle that outperforms in ways that will surprise you from the moment you first hear its engine roar to life. And it's a truck that will get you respect wherever you ride, with sculpted, aggressive lines that are sure to turn heads. Not to mention premium accents and interior features that will make any drive a pleasure, whether it's on the highway or down a back-country road. If you're surprised, you shouldn't be. Toyota has been taking trucks this seriously for over 80 years, and the Tacoma is backed by our proud and rugged heritage. And you can count on that durability for years to come with the fact that over 90% of Toyota Pick-ups sold in Canada in the last 20 years are still on the road today.¹⁷



4x4 Double Cab V6 TRD PRO Package shown in Cavalry Blue. FRONT COVER 4x4 Double Cab V6 TRD Off-Road shown in Inferno.

COMFORT MEETS COOL

DESIGNER STYLE AND COMFORT, PLUS ADVANCED TECHNOLOGY.

As rugged and powerful as it is, the 2018 Tacoma also makes plenty of room for comfort and style. The interior has been carefully designed to help you get the most out of every journey, with a refined, sporty style that includes sophisticated soft touch materials and metallic accents. And while you maintain your grip on the road, you don't have to lose touch with anything on the outside world, thanks to an array of technologies and advanced features that are always within reach. If you weren't booting up a mountain road or hauling down a heavy load, you might almost forget you were driving a truck. Almost.

DISPLAY AUDIO SYSTEM⁴ The available Display Audio System⁴ with Navigation⁵ features a 7-inch touch-screen with Bluetooth[®] wireless music streaming and a unique "text-to-voice" feature that converts text messages from your phone into voice messages, which play through the vehicle's speaker system.

AVAILABLE Qi CHARGER Leave the charging cable at home. Simply place your Qi-compatible device on top of the nonslip surface to charge up.

GoPro[®] MOUNT ON WINDSHIELD Tacoma comes standard with an integrated GoPro[®] mount on the windshield, so you and your crew can share the good times with the world.

CAPABILITY THAT GOES BEYOND THE EXPECTED.

Toyota Pick-ups are ingeniously capable, and built for serious adventure. When it comes to giving you what you need, the 2018 Tacoma delivers way beyond your expectations, which will make it the most exhilarating, enjoyable truck you'll ever drive. And that feeling comes from much more than simply how good it looks – it comes from how it's actually built and designed. The Tacoma has a high strength, triple tech frame to improve rigidity, as well as ride and handling. The bed itself is made of an ultra-durable, fibre-reinforced Sheet-Moulded composite surface that is dent-resistant and corrosion-free, with a greater impact strength than steel. Then there's the easy to lower tailgate that opens using just two fingers, which can also be easily removed when needed. More than you expected? Perfect – that's just how we planned it.



Easy Lower Tailgate



6 120 V/400 W Power Outlet



Deck Rail System



Fibre-Reinforced Sheet-Moulded Composite Bed

DESIGN THAT GOES DEEP



4X4 Double Cab V6 TRD Sport shown in Barcelona Red Metallic.

THE TRUCK THAT CANADA DEMANDS



OVERBUILT TO PERFORM

TOUGH, RUGGED, AND READY FOR EVERYTHING.

What makes the 2018 Tacoma the most exciting truck on and off the road today? Without a doubt, it's the ingenious pairing of sheer power and brute strength that a country like Canada demands. With both 4-cylinder and V6 options available and with your choice of Access Cab and Double Cab configurations, you can have the Tacoma that meets your needs perfectly. The 3.5 L Atkinson cycle V6 engine with D-4S Fuel Injection is particularly impressive, offering 278 hp at 6,000 rpm and 265 lb.ft. of torque at 4,600 rpm. Tacoma also features an available 6-speed automatic transmission with electronic shift to help deliver quick and easy shifting. Couple that with Tacoma's finely-tuned suspension for smooth on-road and "go anywhere" off-road performance, and you'll be able to make the most out of any obstacle. No matter where you go, this workhorse can take everything you need, with a towing capacity of up to 6,500 pounds. That's not just strong. That's Tacoma strong.



4X4 Access Cab V6 TRD Off-Road shown in Quicksand.

TRAILER-SWAY CONTROL (TSC) When a vehicle is towing a trailer, various weather, road, and steering conditions can result in dangerous trailer sway. Standard on all V6 models, Tacoma's TSC is a system that detects trailer sway and applies brake pressure at individual wheels and controls engine torque to help stabilize the trailer. The system also illuminates the stop lamps to alert drivers to the fact that your vehicle is decelerating.

BILSTEIN SHOCKS Available Bilstein shocks help soak up the heavy dips and bumps to deliver a ride so comfortable, you'll mistake the off-road for the blacktop. Tacoma also offers ventilated front disc brakes that deliver confident stopping power no matter how bad the road or weather conditions are.

MULTI-TERRAIN SELECT The available Multi-Terrain Select system regulates wheelspin by automatically adjusting the engine throttle and brakes, helping improve traction.

CRAWL CONTROL Available Crawl Control automatically adjusts acceleration and braking when driving over jagged off-road terrain or on slippery surfaces and minimizes wheelspin and wheel lock-up.



SAFETY FIRST

AVAILABLE FEATURES

Blind Spot Monitor⁹ w/Rear Cross-Traffic Alert⁹
Clearance & Backup Sensors
Trailer-Sway Control
Tire Pressure Monitoring System

Toyota
Safety
Sense

WE ALL DESERVE TO

ARRIVE SAFE

At Toyota, we believe that no matter what the destination, everyone deserves to arrive safely. That's why we created Toyota Safety Sense™ (TSS)¹⁰ – an advanced suite of innovative safety features designed to help protect drivers, passengers, pedestrians (TSS-P only) and people in other vehicles from harm. TSS is comprised of active features such as Pre-Collision System (PCS),¹¹ Lane Departure Alert (LDA)¹² and Automatic High Beams (AHB)¹⁴ and are standard on virtually all models. TSS represents the latest milestone in our long history of creating advancements and innovations in safety that have helped prevent crashes and protect people.

PRE-COLLISION SYSTEM WITH PEDESTRIAN DETECTION¹¹ Provides collision avoidance or collision mitigation support in speed ranges where frontal collisions are likely to occur. In certain conditions, the Pre-Collision System with Pedestrian Detection (PCS w/PD) may also help to detect pedestrians and help prevent or mitigate a collision.

AUTOMATIC HIGH BEAMS¹⁴ Designed to detect oncoming and preceding vehicles' lights and depending upon the circumstances, Automatic High Beams (AHB) can switch between high and low beams for you.

LANE DEPARTURE ALERT¹² Alerts you if you start to drift out of your lane when visible lane markings are detected.

DYNAMIC RADAR CRUISE CONTROL¹³ Using forward sensing radar technology, the system can automatically adjust vehicle speed to help maintain a preset following distance between you and the vehicle directly in front of you.

4X4 Double Cab V6 TRD Sport shown in Blazing Blue Metallic.

SELECT FEATURES

INTERIOR

	SR+ 4-Cyl	SRS 4-Cyl 6AT	TRD Off-Road V6 6MT	SRS V6 6AT	TRD Off-Road V6 6AT	TRD Sport V6 6MT	SRS V6 6AT	Limited V6 6AT
	ACCESS CAB 4X2	ACCESS CAB 4X4	DOUBLE CAB 4X4					
ENTERTAINMENT & CONNECTIVITY								
6.1" Touch Panel Display Audio, ⁴ AM/FM/CD Player	●	● – ●	– – ● –					
7" Touch Panel Display Audio ⁴ w/Navigation, ⁵ AM/FM/CD Player	–	– ● –	● ● – –					
7" Touch Panel Display Audio ⁴ w/Navigation, ⁵ JBL® AM/FM/CD Player	–	– – –	– – – ●					
SiriusXM® Satellite Radio, Gracenote® Album Cover Art	–	● ● ●	● ● ● ●					
USB Input Port, Auxiliary Input Jack, Bluetooth® ³ Hands-Free Phone Connectivity/Wireless Audio Streaming/Phone Book Access	●	● ● ●	● ● ● ●					
Voice Recognition	●	– – –	– – – –					
Advanced Voice Recognition	–	● ● ●	● ● ● ●					
6-Speakers	●	● ● ●	● ● ● –					
7-Speakers including Subwoofer	–	– – –	– – – ●					
Steering Wheel Bluetooth® ³ & Audio Controls	●	● ● ●	● ● ● ●					
Backup Camera	●	● ● ●	● ● ● ●					
2.2" Multi-Information Display	●	– – –	– – – –					
4.2" TFT Multi-Information Display	–	● ● ●	● ● ● ●					
Integrated GoPro® Windshield Mount	–	● ● ●	● ● ● ●					
Qi Wireless Charging	–	– – –	– ○ – ●					
COMFORT & CONVENIENCE								
Air Conditioning	●	● – ●	– – ● –					
Dual Zone Automatic Climate Control	–	– ● –	● ● – ●					
Rear Seat Heater Ducts	–	● ● ●	● ● ● ●					
Dual Illuminated Vanity Mirrors	–	● ● ●	● ● ● ●					
Auto-Dimming Rear View Mirror w/Digital Compass	–	– ● ●	● ● ● ●					
Power Door Locks	●	● ● ●	● ● ● ●					
Power Windows w/Driver Side Auto-Down	●	● – ●	– – ● –					
Power Windows w/Driver & Front Passenger Auto Up/Down	–	– ● –	● ● – ●					
Rear Privacy Glass	●	● ● ●	● ● ● ●					
4-Spoke, Power Tilt & Telescopic Steering Wheel	●	● ● ●	● ● ● ●					
Push Button Start, Smart Key System	–	– – –	● – – ●					
Garage Door Opener	–	– ● –	● ● – ●					
Front Centre Console	●	● ● ●	● ● ● ●					
Rear Under Seat Storage	●	● ● ●	● ● ● ●					
Leather-Wrapped Steering Wheel	–	● ● ●	● ● ● ●					
Leather-Wrapped Shift Knob	–	– ● –	● – ● ●					
Carpeting, Carpet Floor Mats, All-Season Floor Mats	●	● ● ●	● ● ● ●					
Glove Box Lamp, Cargo Lamp, Map Lamps	●	● ● ●	● ● ● ●					
Illuminated Entry	●	● ● ●	● ● ● ●					
Keyless Entry	●	● ● ●	● ● ● ●					

INTERIOR (cont'd)

	SR+ 4-Cyl	SRS 4-Cyl 6AT	TRD Off-Road V6 6MT	SRS V6 6AT	TRD Off-Road V6 6AT	TRD Sport V6 6MT	SRS V6 6AT	Limited V6 6AT
	ACCESS CAB 4X2	ACCESS CAB 4X4	DOUBLE CAB 4X4					
SEATING & TRIM								
Front Bucket Seats	●	– – –	– – – –					
Heated Front Bucket Seats	–	● ● ●	● ● ● ●					
Fabric Seat Material	●	– – –	– – – –					
SR5 Grade Fabric Seat Material	–	● – ●	– – ● –					
TRD Grade Fabric Seat Material	–	– ● –	● ● – –					
Premium Leather Seat Surfaces	–	– – –	– – – ●					
Driver & Front Passenger Seats w/Recline, Fore/Aft, Vertical Adjustments	●	● ● ●	● ● ● ●					
Rear Jump Seats w/Fold-Up Seat Cushion	●	● ● ●	– – – –					
60/40 Split Rear Bench Seats w/Fold-Up & Fold-Down Feature	–	– – –	● ● ● ●					



EXTERIOR

5-Foot Cargo Bed	–	– – –	● ● – ●					
6-Foot Cargo Bed	●	● ● ●	– – ● –					
Manual Sliding Rear Window	●	● ● ●	– – ● –					
Power Sliding Rear Window	–	– – –	● ● – ●					
Colour-Keyed Side View Mirrors/Door Handles	●	– – –	– – – –					
Dual Colour-Keyed Side View Mirrors/Door Handles	–	● ● ●	● ● ● –					
Dual Chrome Side View Mirrors/Door Handles	–	– – –	– – – ●					
Heated, Power Adjustable Foldable Mirrors	●	● – ●	– – ● –					
Heated, Power Adjustable Foldable Mirrors w/Integrated Turn Signals	–	– ● –	● ● – ●					
Rear Step Bumper	●	● ● ●	● ● ● ●					
Chrome Steel Rear Bumper End	–	● ● ●	– – – –					
Colour-Keyed Rear Bumper End	–	– – –	● ● ● ●					
Colour-Keyed Fender Flares	●	● – ●	– ● ● ●					
Black Fender Flares	–	– ● –	● – – –					
Fuel Tank & Transfer Case Protector Plate	–	– ● –	● – – –					
Hood Scoop	–	– – –	– ● – –					
Power Moonroof (Standard on Manual Transmission)	–	– – –	– ○ – ●					
Class IV Towing Hitch Receiver, 7-Pin Connector	–	– ● ●	● ● ● ●					
Black Bar Grille Surround	–	● – ●	– – ● –					
Mesh Black Chrome Grille Surround	–	– ● –	● ● – –					
Chrome Bar Grille Surround	–	– – –	– – – ●					
120 Volt (400 Watt) Cargo Bed AC Power Outlet	–	– ● ●	● ● ● ●					

EXTERIOR (cont'd)

	SR+ 4-Cyl	SRS 4-Cyl 6AT	TRD Off-Road V6 6MT	SRS V6 6AT	TRD Off-Road V6 6AT	TRD Sport V6 6MT	SRS V6 6AT	Limited V6 6AT
	ACCESS CAB 4X2	ACCESS CAB 4X4	DOUBLE CAB 4X4					
Variable Intermittent Wipers	●	● ● ●	● ● ● ●					
Double Wall Cargo Bed, Composite (SMC) Cargo Bed	●	● ● ●	● ● ● ●					
Cargo Bed Tie-Downs, Tie-Down Cleats	●	● ● ●	● ● ● ●					
Easy Lower & Lift Tailgate, Removable Locking Tailgate	●	● ● ●	● ● ● ●					
Fog Lamps	–	● ● ●	● ● ● ●					
Halogen Headlamps	●	● ● ●	● ● ● ●					
Projector Style Low Beam Headlamps	●	● ● ●	● ● ● ●					
LED Daytime Running Lights	–	– ● –	● ● – ●					
Chrome Side Step Bars	–	– – –	– – – ●					

SAFETY

 Toyota Safety Sense™ (TSS-P) ¹⁰ – includes Pre-Collision System w/Pedestrian Detection (PCS/PD), ¹¹ Lane Departure Alert (LDA), ¹² Dynamic Radar Cruise Control (DRCC), ¹³ & Automatic High Beams (AHB) ¹⁴	●	● ● ●	● ● ● ●					
 Star Safety System™ – includes Vehicle Stability Control (VSC), ⁶ Traction Control (TRAC), Anti-lock Brake System (ABS), Electronic Brake-force Distribution (EBD), Brake Assist (BA) ⁷ & Smart Stop Technology (SST) ⁸	●	● ● ●	● ● ● ●					
Dual-Stage Driver & Front Passenger Airbags (SRS) ¹	●	● ● ●	● ● ● ●					
Driver & Front Passenger Knee Airbags (SRS) ¹	●	● ● ●	● ● ● ●					
Front Seat-Mounted Side Airbags (SRS) ¹	●	● ● ●	● ● ● ●					
Roll-Sensing Front & Rear Head/Side Curtain Airbags (SRS) ¹	●	● ● ●	● ● ● ●					
Active Front Headrests w/Whiplash Protection	●	● ● ●	● ● ● ●					
Blind Spot Monitor (BSM) ⁹	–	– – –	– ○ – ●					
Rear Cross-Traffic Alert (RCTA) ⁹	–	– – –	– ○ – ●					
Clearance & Backup Sensors	–	– – –	– – – ●					
Trailer-Sway Control (TSC)	–	– ● ●	● ● ● ●					
Assist Grips	●	● ● ●	● ● ● ●					
Engine Immobilizer	●	● ● ●	● ● ● ●					
Low Washer Fluid, Door Ajar, Driver & Front Passenger Seatbelt Warning Indicators	●	● ● ●	● ● ● ●					
Vehicle Anti-Theft System	–	– ● –	● ● – ●					
Cruise Control	●	● ● ●	● ● ● ●					
Tire Pressure Monitoring System	–	– – ●	– – – ●					

AVAILABLE PACKAGES

	SR+ 4-Cyl	SRS 4-Cyl 6AT	TRD Off-Road V6 6MT	SRS V6 6AT	TRD Off-Road V6 6AT	TRD Sport V6 6MT	SRS V6 6AT	Limited V6 6AT
	ACCESS CAB 4X2	ACCESS CAB 4X4	DOUBLE CAB 4X4					
ACCESS CAB V6 TRD OFF-ROAD PACKAGE								
P265/70R16 All-Terrain Tires, 7" Touch Panel Display Audio ⁴ w/Navigation, ⁵ Front Sport Seats w/TRD Fabric Seat Surfaces, Dual Zone Automatic Climate Control, Power Windows w/Driver & Front Passenger Auto Up/Down, Push Button Start, Smart Key System, Garage Door Opener, TRD Decals, Front & Rear Bilstein Shock Absorbers, 4-Wheel Crawl Control, Multi-Terrain Select, Chrome Grille, Black Fender Flares, Vehicle Anti-Theft System, Rear Differential Lock, Fuel Tank & Transfer Case Protector Plates, LED Daytime Running Lights, Tire Pressure Monitoring System	–	– – – ○	– – – –					
DOUBLE CAB TRD PRO PACKAGE								
16" TRD Black Alloy Wheels, All-Terrain Tires, Black TRD PRO Leather Trimmed Heated Front Bucket Seats, Black Leather Trimmed Rear Bench Seats, TRD PRO Skid Plate, "TOYOTA" Front Grille w/Colour-Keyed Grille Surround, TRD PRO Tuned Off-Road Suspension w/FOX® Shocks w/Rear Remote Reservoirs, TRD Tuned Front Coil Springs & Rear Leaf Springs, Active Traction Control (MTM only), TRD PRO Shift Knob, TRD PRO Carpet Floor Mats, Colour-Keyed Rear Bumper, Black Over Fenders, Hood Scoop w/Matte Black Decal, Rigid Industries LED Fog Lights, TRD PRO Badges, Black Headlight & Taillight Sport Bezels, Blind Spot Monitor (ATM only), Rear Cross Traffic Alert (ATM only), Power Moonroof (ATM only), Qi Wireless Charging	–	– – –	○ ○ – –					
DOUBLE CAB TRD SPORT PACKAGE								
17" Aluminum Alloy Wheels, Wheel Locks, P265/65R17 Tires, 7" Touch Panel Display Audio ⁴ w/Navigation, ⁵ Front Sport Seats w/TRD Fabric Seat Surfaces, Dual Zone Automatic Climate Control, Push Button Start, Smart Key System, Garage Door Opener, Colour-Keyed Door Handles/Over Fenders/Mirrors/Grille Surround/Bumpers, Power Rear Sliding Window, Hood Scoop, TRD Decals, Sport Tuned Suspension, LED Daytime Running Lights, Tire Pressure Monitoring System	–	– – –	– – ○ –					
DOUBLE CAB TRD SPORT UPGRADE PACKAGE								
Double Cab TRD Sport Package plus: Leather Seats, Power Moonroof, Qi Wireless Charging, Blind Spot Monitor (BSM), ⁹ Rear Cross-Traffic Alert (RCTA) ⁹	–	– – –	– – ○ –					

SELECT FEATURES (CONT'D)

MECHANICAL

ENGINE

Type	ACCESS CAB 4X2	ACCESS CAB 4X4	DOUBLE CAB 4X4
2.7 Litre, 4-Cylinder, DOHC, 16-Valve, Variable Valve Timing w/intelligence, Sequential Multiport Electronic Fuel Injection	●	● – –	– – – –
3.5 Litre, V6, DOHC, 24-Valve, Variable Valve Timing w/intelligence, Atkinson Cycle V6 w/D-4S Fuel Injection	–	– ● ●	● ● ● ●
Engine Oil Cooler, Upgraded Alternator	–	– ● ●	● ● ● ●
Horsepower			
159 hp @ 5200 rpm	●	● – –	– – – –
278 hp @ 6000 rpm	–	– ● ●	● ● ● ●
Torque			
180 lb.ft. @ 3800 rpm	●	● – –	– – – –
265 lb.ft. @ 4600 rpm	–	– ● ●	● ● ● ●

DRIVETRAIN

Drive Configuration				
Rear Wheel Drive w/Automatic Limited Slip Differential	●	– – –	– – – –	
Part Time 4WD w/Electronically Controlled Transfer Case & Automatic Limited Slip Rear Differential	–	● ● ●	● ● ● ●	
Active Traction Control (A-TRAC)	–	– ● –	– – – –	
Hill-start Assist Control (HAC) ¹⁵ (Automatic Only)	●	● – ●	● – ● ●	
Locking Rear Differential	–	– ● –	● – – –	
4-Wheel Crawl Control, Multi-Terrain Select	–	– – ○	– ● – –	
Transmission				
6-Speed, Manual	–	– ● –	– ● – –	
6-Speed, Automatic, Electronically Controlled Transmission w/intelligence	●	● – ●	● – ● ●	
Lock-Up Torque Converter	●	● – ●	● – ● ●	

MECHANICAL (cont'd)

CHASSIS

Suspension							
Front: Coil Springs, Double-Wishbone & Stabilizer Bar	●	● ● ●	●	● ● ● ●			
Rear: Multi-Leaf Spring w/Staggered Outboard-Mounted Gas Shock Absorbers & Stabilizer Bar	●	● ● ● ●	●	● ● ● ●			
Front/Rear: Bilstein Shock Absorbers	–	– ● ○	●	– – –			
Front/Rear: Sport Tuned Shock Absorbers	–	– – –	–	● ○ –			
Front: Independent TRD Coil-Spring High-Mounted Double-Wishbone Front Suspension for a 2" Lift w/Stabilizer Bar & TRD FOX® Shock Absorbers w/Rear Remote Reservoirs	–	– – –	○ ○	– – –			
Rear: Live Axle w/Trapezoidal Multi-Leaf Rear Suspension w/Staggered Outboard-Mounted TRD FOX® Shock Absorbers w/Rear Remote Reservoirs	–	– – –	○ ○	– – –			
Brakes							
Power-Assisted, Ventilated Front Discs, Rear Drums	●	● ● ● ●	●	● ● ● ●			
Steering							
Rack & Pinion w/Variable Power Assist	●	– – –	–	– – –			
Hydraulic Assisted Power Steering	–	● ● ● ●	●	● ● ● ●			
Wheels & Tires							
16" Aluminum Alloy Wheels, P245/75R16 All-Season Tires, Full-Size Spare Tire w/Steel Wheel	●	● – ●	–	– ● –			
16" Aluminum Alloy Wheels, P265/70R16 All-Terrain Tires, Full-Size Spare Tire	–	– ● ○	●	– – –			
17" Aluminum Alloy Wheels, P265/65R17 All-Season Tires, Full-Size Spare Tire w/Steel Wheel	–	– – –	–	● ○ –			
18" Aluminum Alloy Wheels, P265/60R18 All-Season Tires, Full-Size Spare Tire w/Steel Wheel	–	– – –	–	– – – ●			

DIMENSIONS

	mm (in.)	ACCESS CAB 4X2	ACCESS CAB 4X4	DOUBLE CAB 4X4
Length				
	5393 (212.3)	●	● ● ●	● ● ● ●
	5728 (225.5)	–	– – –	– – ● –
Width				
	1889 (74.4)	●	● – ●	– – ● –
	1910 (75.2)	–	– ● –	● ● – ●
Height (Unloaded)				
	1793 (70.6)	●	● ● ● ●	● ● ● ●
	1819 (71.6)	–	– – –	○ ○ – –
Cargo Bed Length				
	1536 (60.5)	–	– – –	● ● – ●
	1872 (73.7)	●	● ● ● ●	– – ● –
Cargo Bed Width	1054 (41.5) Between Wheel Wells	●	● ● ● ●	● ● ● ●
Cargo Bed Depth	485 (19.1)	●	● ● ● ●	● ● ● ●
Wheelbase				
	3235 (127.4)	●	● ● ● ●	● ● – ●
	3571 (140.6)	–	– – –	– – ● –
Track				
	Front: 1600 (63.0)	●	● ● ● ●	● ● ● ●
	Rear: 1605 (63.2)	●	● ● ● ●	● ● ● ●
	Front: 1626 (64.0)	–	– – –	○ ○ – –
	Rear: 1631 (64.2)	–	– – –	○ ○ – –
Headroom				
	Front: 1008 (39.7)	●	● ● ● ●	● ● ● ●
	Rear: 886 (34.9)	●	● ● ● ●	– – – –
	Rear: 972 (38.3)	–	– – –	● ● ● ●
Legroom				
	Front: 1089 (42.9)	●	● ● ● ●	● ● ● ●
	Rear: 624 (24.6)	●	● ● ● ●	– – – –
	Rear: 828 (32.6)	–	– – –	● ● ● ●
Shoulder Room				
	Front: 1480 (58.3)	●	● ● ● ●	● ● ● ●
	Rear: 1435 (56.5)	●	● ● ● ●	– – – –
	Rear: 1496 (58.9)	–	– – –	● ● ● ●
Turning Circle	<i>m (ft.)</i>			
	12.4 (40.6)	●	● ● ● ●	● ● – ●
	13.4 (44.1)	–	– – –	– – ● –
Ground Clearance	238 (9.4)	●	● ● ● ●	● ● ● ●
Approach Angle (degrees)	29	●	● – ●	– ● ● ●
	32.1	–	– ● ○	● – – –
	35	–	– – –	○ ○ – –
Departure Angle (degrees)	23	–	● ● ● ●	– – – –
	23.5	●	– – –	● ● ● ●
	23.1	–	– – –	– – ● –
	19.1	–	– – –	○ ○ – –

WEIGHT & CAPACITIES

Curb Weight	<i>kg (lb)</i>						
Manual	1957 (4315)	–	– ● –	– – – –			
	2016 (4445)	–	– – –	– ● – –			
Automatic	1882 (4150)	●	– – –	– – – –			
	1940 (4295)	–	● – –	– – – –			
	1916 (4225)	–	– – ●	– – – –			
	1975 (4355)	–	– – –	● – ● –			
	2032 (4480)	–	– – –	– – – ●			
Seat Capacity							
	4	●	● ● ● ●	– – – –			
	5	–	– – –	● ● ● ●			
Payload¹⁶	<i>kg (lb)</i>						
	680 (1500)	●	– – –	– – – –			
	585 (1300)	–	● – –	– – – –			
	495 (1100)	–	– ● –	– – – –			
	520 (1150)	–	– – ●	– – – –			
	430 (950)	–	– – –	– ● ● –			
	450 (1000)	–	– – –	● – – ●			
Fuel Capacity	<i>litres (imperial gallon)</i>						
	80 (17.6)	●	● ● ● ●	● ● ● ●			
Towing Capacity	<i>kg (lb)</i>						
	1590 (3500)	●	● – –	– – – –			
	2950 (6500)	–	– ● ●	– – – –			
	2900 (6400)	–	– – –	● ● ● ●			

FUEL CONSUMPTION RATING²

City/Highway/Combined	<i>L/100 km</i>	<i>mpg (imperial gallon)</i>					
Manual	13.8/11.4/12.7	20/25/22	–	– ● –	– – – –		
	13.8/11.7/12.9	20/24/22	–	– – –	– ● – –		
Automatic	12.1/10.1/11.2	23/28/25	●	– – –	– – – –		
	12.7/10.6/11.7	22/27/24	–	● – –	– – – –		
	13.2/10.7/12.1	21/26/23	–	– – ●	● – ● ●		

COLOUR SECTION

EXTERIOR COLOUR

040 ALPINE WHITE	1D6 SILVER SKY METALLIC	1H5 CEMENT GREY METALLIC	1G3 MAGNETIC GREY METALLIC
218 MIDNIGHT BLACK METALLIC	3R3 BARCELONA RED METALLIC	4V6 QUICKSAND	4X0 INFERNO
8T0 BLAZING BLUE METALLIC	8W2 CAVALRY BLUE		

INTERIOR COLOUR

4X2 SR+	4X4 SR5	4X4 TRD OFF-ROAD	4X4 TRD SPORT	4X4 SR5 V6	4X4 LIMITED
GREY FABRIC	GREY FABRIC	DARK GREY FABRIC	DARK GREY FABRIC	GREY FABRIC	BLACK LEATHER
		BLACK/ORANGE FABRIC			HICKORY LEATHER
			TRD SPORT UPGRADE PACKAGE		TRD PRO PACKAGE
			BLACK LEATHER		BLACK LEATHER

Not all exterior and interior colour options are available for every model. Visit toyota.ca or your Dealer for details on colour configurations.

NEW VEHICLE WARRANTY SUMMARY – No deductibles – no transfer fees

COMPREHENSIVE COVERAGE 3 YEARS OR 60,000 KM. This warranty includes 24 hour Roadside Assistance and other benefits, as well as coverage of repairs on any part of the vehicle that is defective in material or workmanship under normal use and maintenance. Different warranties apply to original tires.	MAJOR EMISSION CONTROL COMPONENTS 8 YEARS OR 130,000 KM. This warranty covers repairs to specified major emission components that are defective in material or workmanship under normal use and maintenance.
POWERTRAIN COMPONENTS 5 YEARS OR 100,000 KM. This warranty covers repairs to powertrain components that are defective in material or workmanship under normal use and maintenance.	CORROSION PERFORATION 5 YEARS/UNLIMITED DISTANCE. This warranty covers any sheet metal found, under normal use, to have developed a perforation from corrosion due to defects in material or workmanship.

TEST DRIVE AND EARN AEROPLAN® MILES TODAY



You can earn Aeroplan®¹⁸ Miles when you purchase, test drive, or service your vehicle at a Toyota Dealership. Speak to your Dealer for full details.

GENUINE ACCESSORIES

Toyota's Genuine Accessories are custom designed and built to fit your specific Toyota vehicle and are backed by a Toyota Warranty. For a complete list of vehicle-specific accessories, visit accessories.toyota.ca or your local Dealer.

INTERIOR

Toyota Genuine Dash Camera
Tub-Style All-Season Floor Mats

EXTERIOR

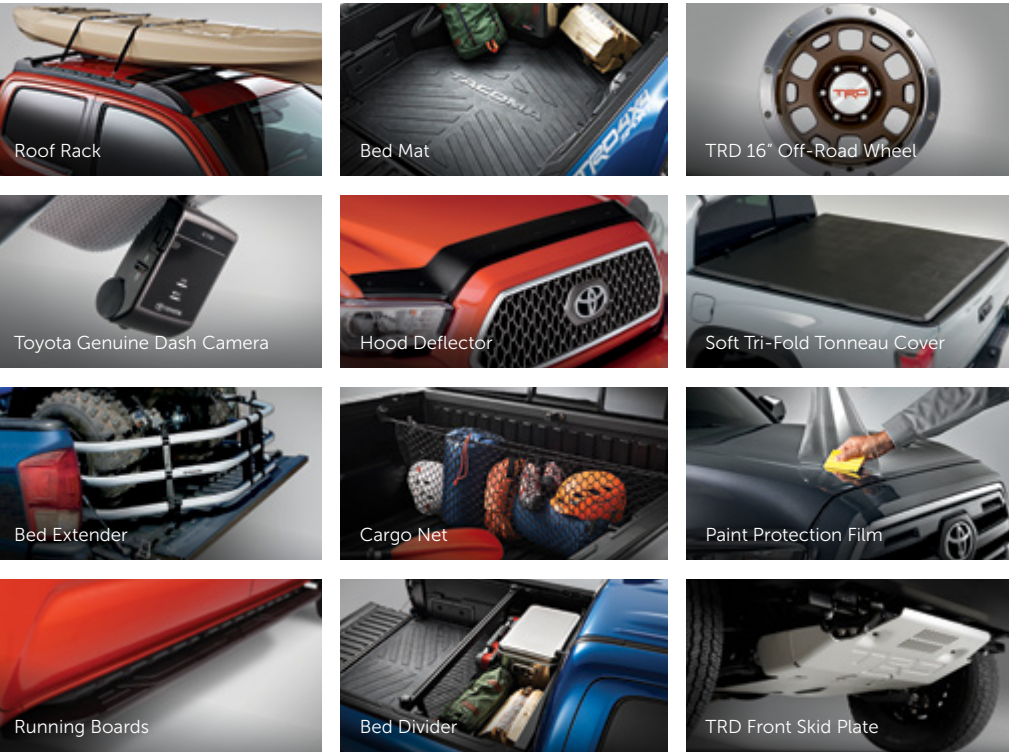
Block Heater
Exhaust Tip
Hitch Plug
Hood Deflector
Hood Graphic
Paint Protection Film
Roof Rack
Running Boards
Side Step Bars - 4" Chrome
Side Step Bars - 5" Black
Side Step Bars - 5" Chrome
Spare Tire Lock
Towing Accessories

BED ACCESSORIES

Bed Cleats
Bed Divider
Bed Extender
Bed Mat
Cargo Net
D-Rings
Soft Tri-Fold Tonneau Cover

TRD ACCESSORIES

TRD 16" Alloy Wheels
TRD 16" Off-Road Wheels
TRD Exhaust System
TRD Front Skid Plate
TRD LED Fog Lights
TRD Shift Knob



DISCLAIMERS

(1) All Toyota vehicles shown in this brochure have Supplemental Restraint Systems (SRS). For important safety information about the Supplemental Restraint System in a particular vehicle, please see the Owner's Manual or contact your local Toyota Dealer. (2) Fuel efficiency estimates were determined using approved Government of Canada Test Methods. Actual fuel consumption will vary based on driving habits and other factors. (3) Do not use the hands-free phone system if it will distract you. A compatible Bluetooth®-enabled phone must first be paired. Phone performance depends upon software, coverage and carrier. (4) Driving while distracted can result in loss of vehicle control. Always drive safely, obey traffic laws and focus on the road and traffic conditions while driving. (5) Availability and accuracy of the information provided by the navigation system is dependent upon many factors. Use common sense when relying on information provided. Services and programming subject to change. Services not available in every city or roadway; updates may be available at an additional cost from your Dealer. (6) Vehicle Stability Control (VSC) is an electronic system designed to help the driver maintain vehicle control under adverse conditions. It is not a substitute for safe driving practices. Factors including speed, road conditions and driver steering input can all affect VSC system effectiveness. (7) Brake Assist is designed to help the driver take full advantage of the benefits of ABS. It is not a substitute for safe driving practices. Braking effectiveness also depends on proper brake-system maintenance and tire and road conditions. (8) Smart Stop Technology operates only in the event of certain simultaneous brake and gas pedal applications. When engaged, the system will reduce engine power to help the brakes bring the vehicle to a stop. Factors including speed, road conditions, and driver input can all impact stopping distance. Smart Stop Technology is not a substitute for safe and attentive driving and does not guarantee instant stopping. (9) Do not rely exclusively on the Blind Spot Monitor System and Rear Cross-Traffic Alert System. They are not collision-avoidance systems or substitutes for safe and attentive driving. (10) Drivers should always be responsible for their own safe driving. Please always pay attention to your surroundings and drive safely. Depending on the conditions of roads, vehicles, weather, etc., the TSS systems may not work as intended. (11) The TSS Pre-Collision System is designed to help avoid or reduce the impact speed and damage in certain frontal collisions only. The Pedestrian Detection system is designed to detect a pedestrian ahead of the vehicle, determine if impact is imminent and help reduce impact speed. It is not a substitute for safe and attentive driving. System effectiveness depends on many factors, such as speed, size and position of pedestrians, driver input and weather, light and road conditions. (12) Lane Departure Alert is designed to read lane markers under certain conditions and provide visual and audible alerts when lane departure is detected. It is not a collision-avoidance system or a substitute for safe and attentive driving. (13) Dynamic Radar Cruise Control is designed to assist the driver and is not a collision-avoidance system or a substitute for safe and attentive driving practices. System effectiveness depends on many factors such as weather, traffic and road conditions. (14) Automatic High Beam system operates at speeds above approximately 34 km/h. Factors such as a dirty windshield, variable weather, lighting conditions and hilly terrain will limit effectiveness, requiring the driver to manually turn it off. (15) HAC is designed to help minimize backward rolling on steep ascents. This system is not a substitute for safe driving judgment and practices. Factors including speed, grade, surface conditions and driver input can all affect whether HAC will be effective in preventing a loss of control. (16) Payload = Passengers, Equipment, Luggage and Cargo. (17) Based on IHS Automotive Canadian Vehicles in Operation and New Registrations MY 1997-2016 as of June 30, 2016. Actual longevity of any vehicle will vary based upon operating conditions. (18) ®Aeroplan and the Aeroplan logo are registered trademarks of Aimia Canada Inc.

Details on the above features can be found in the Owner's Manual or contact your local Toyota Dealer.

Toyota Canada Inc. Every effort has been made to ensure the specifications and equipment shown are accurate based on information available at time of printing. In some cases, certain changes in production capacity, standard equipment, options or product delays may occur which would not be reflected in this brochure. Toyota Canada Inc. reserves the right to make these changes without notice or obligation. The Toyota website toyota.ca – or your Toyota Dealer is your best source for up-to-date information.





PRIUS c



PRIUS



PRIUS PRIME



PRIUS v



YARIS HATCHBACK



YARIS SEDAN



COROLLA



COROLLA iM



C-HR



CAMRY



AVALON



86



SIENNA



RAV4



HIGHLANDER



4RUNNER



SEQUOIA



TACOMA



TUNDRA

YOU CAN RELY ON EVERY TOYOTA TO GET YOU WHEREVER YOU NEED TO GO TODAY.
AND WITH OUR COMMITMENT TO SAFETY, RELIABILITY, AND VALUE,
WE'LL BE ON THE ROAD WITH YOU FOR MANY YEARS TO COME.



Toyota recognizes its duty to safeguard the environment. Please recycle.
Printed in Canada. C0002-0458E-25 17M



TOYOTA