

Tacoma



2021



TOYOTA

North London Toyota
519-451-3880

Contents

CLICK BELOW TO
NAVIGATE SECTIONS.

Introduction



Ingenious Capability



Stylish Design



Towing & Payload



Safety



Access Cab: Specifications & Features

**SR -
REGULAR BED**



Double Cab: Specifications & Features

**SR -
REGULAR BED**



**TRAIL -
SHORT BED**



**TRD SPORT
PREMIUM -
SHORT BED**



**NIGHTSHADE -
SHORT BED**



Accessories



Warranty



THE 2021 TACOMA

Powerful in every way.



Style, muscle, performance. Check, check, and check.

From serious payloads to serious adventure, the 2021 Tacoma is ready whenever you are - because this is not a truck to be taken lightly. It's a piece of serious engineering, built to take everything you and the world can throw at it, and still come back for more. Backed by 80 years of truck heritage, Tacoma has the power and capability to conquer the toughest jobs and the most extreme terrain with ease. It's a pickup that outperforms expectations, while demanding attention with its sculpted, athletic lines and premium interior accents. Feature for feature, and pound for pound, there's no other truck as capable of turning heads as it is of moving mountains.

[Click to Learn More](#)

[TRD PRO: Learn More](#)



INGENIOUS CAPABILITY

Design that goes deep.

Capability that goes beyond the expected.

Toyota Pickups are ingeniously capable and built for serious adventure. Tacoma delivers beyond your expectations not just in how it looks, but in how it's actually built and designed. The Tacoma has a high strength, triple tech frame to improve rigidity as well as ride and handling. The bed itself is made of an ultra-durable, fibre-reinforced sheet-moulded composite surface that is dent-resistant and corrosion-free, with a greater impact strength than steel. The convenient deck rail system lets you quickly secure your loads, while the easy access 120 V/400W power outlet in the bed gives you the power you need for onsite projects. More than you expected? Perfect – that's just how we planned it.



STYLISH DESIGN

Comfort meets cool.



It's capable on the inside too.

As rugged and powerful as it is, the 2021 Tacoma also makes plenty of room for comfort and style. The sporty interior was designed with sophisticated soft-touch materials to enrich your driving experience. And while you maintain your grip on the road, you don't have to lose touch with anything in the outside world, thanks to an array of intuitive tech like standard Apple CarPlay™¹ and Android Auto™¹ compatibility, 4.2" TFT Multi-Information Display, Backup Camera and available features such as Qi Wireless Charging, Blind Spot Monitor with Rear Cross Traffic Alert and Intelligent Clearance Sonar.

[Click to Learn More](#)

2021 TACOMA

North London Toyota
519-451-3880

TOWING & PAYLOAD

Overbuilt to perform.



Toughness. It's built right in.

Tacoma's ingenious pairing of sheer power and brute strength make it the most exciting truck on and off the road today. The 3.5 L Atkinson cycle V6 engine with D-4S Fuel Injection is particularly impressive, offering 278 hp at 6,000 rpm and 265 lb.ft. of torque at 4,600 rpm. The 6-speed automatic transmission with available electronic shift helps to deliver quick and easy shifting, while also improving fuel economy. Couple that with a towing capacity of up to 6,500 lbs and a finely-tuned suspension for smooth on-road and "go anywhere" off-road performance, and you'll be able to make the most out of any obstacle. That's not just strong. That's Tacoma strong.

Ready for everything.



TRAILER-SWAY CONTROL (TSC)

Weather, road, and steering conditions can result in dangerous trailer sway. Tacoma's TSC is a system that detects trailer sway and applies brake pressure at individual wheels and controls engine torque to help stabilize the trailer. The system also illuminates the stop lamps to alert you to the fact that your vehicle is decelerating.



BILSTEIN SHOCKS AND ABSORBERS

Available Bilstein shocks help soak up the heavy dips and bumps to deliver a ride so comfortable, you'll mistake the off-road for the blacktop. Tacoma also offers ventilated front disc brakes that deliver confident stopping power no matter how bad the road or weather conditions are.



CRAWL CONTROL

Available Crawl Control automatically adjusts acceleration and braking when driving over jagged off road terrain or on slippery surfaces and minimizes wheelspin and wheel lock-up.



MULTI-TERRAIN SELECT

The available Multi-Terrain Select system regulates wheelspin by automatically adjusting the engine throttle and brakes, helping improve traction.

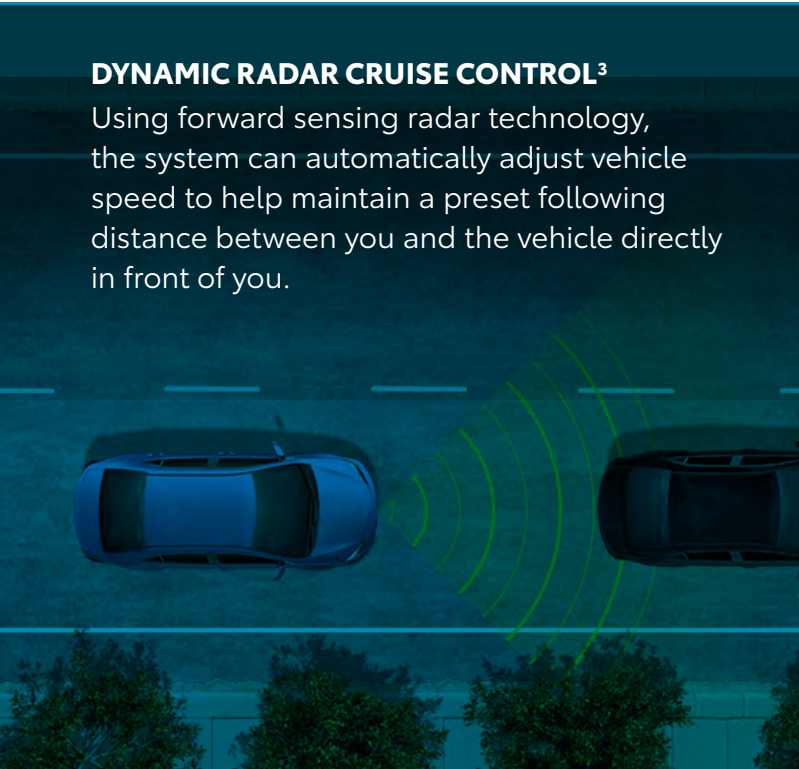


Toyota Safety Sense™

No matter what roads you travel, Toyota Safety Sense™² (TSS-P) is always there to help keep you as safe as possible. It's an advanced suite of innovative safety features that comes standard on the 2021 Tacoma, and it is designed to help protect drivers, passengers, pedestrians, and people in other vehicles from harm.

DYNAMIC RADAR CRUISE CONTROL³

Using forward sensing radar technology, the system can automatically adjust vehicle speed to help maintain a preset following distance between you and the vehicle directly in front of you.



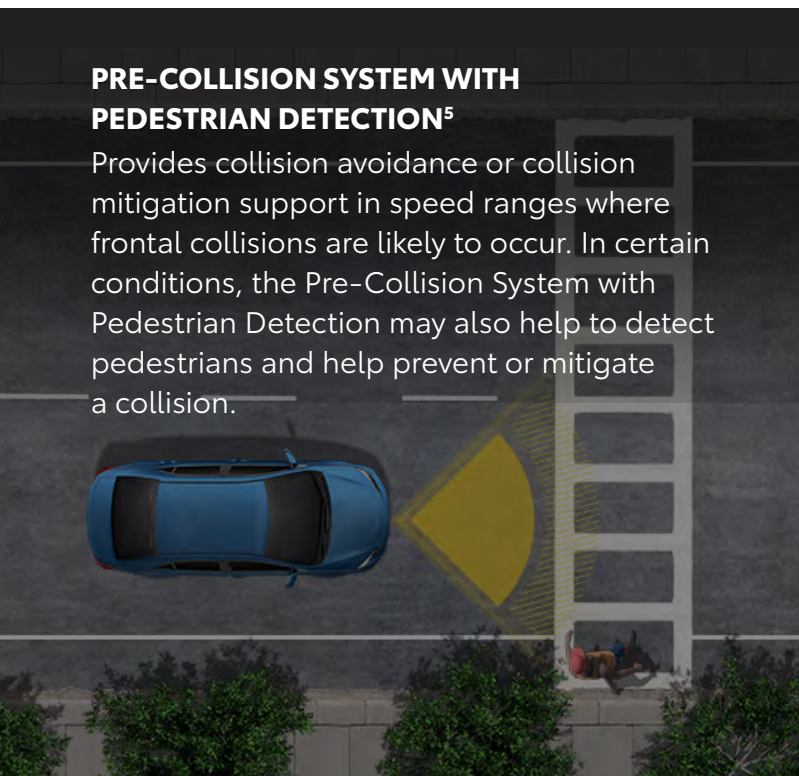
LANE DEPARTURE ALERT WITH STEERING ASSIST⁴

Alerts you if you start to drift out of your lane when visible lane markings are detected. The Steering Assist function may also provide small corrective steering inputs.



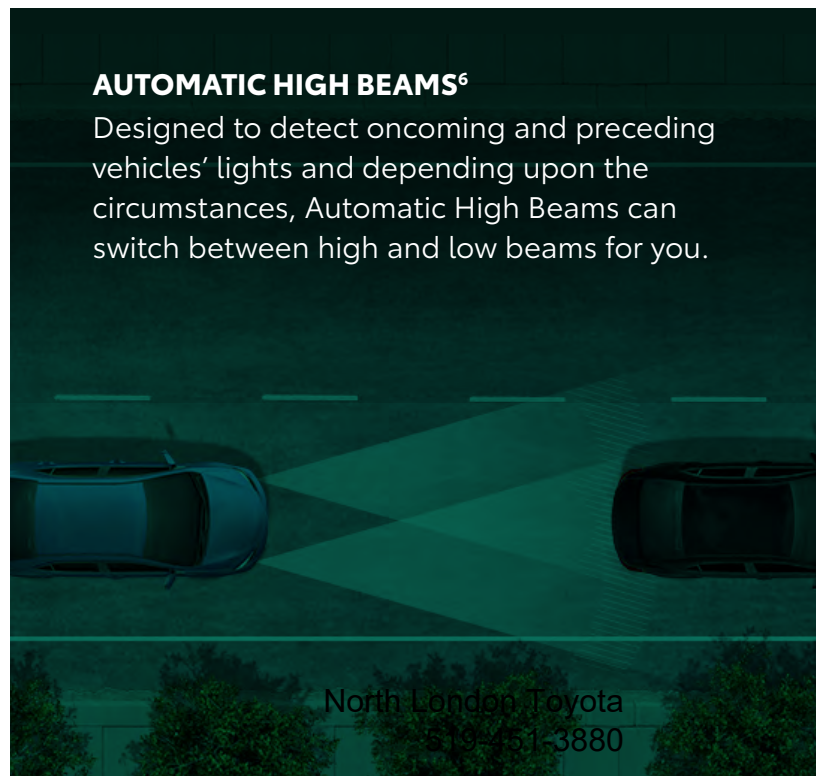
PRE-COLLISION SYSTEM WITH PEDESTRIAN DETECTION⁵

Provides collision avoidance or collision mitigation support in speed ranges where frontal collisions are likely to occur. In certain conditions, the Pre-Collision System with Pedestrian Detection may also help to detect pedestrians and help prevent or mitigate a collision.



AUTOMATIC HIGH BEAMS⁶

Designed to detect oncoming and preceding vehicles' lights and depending upon the circumstances, Automatic High Beams can switch between high and low beams for you.



SR

ACCESS CAB - REGULAR BED



EXTERIOR COLOURS⁷ | [CLICK VEHICLE FOR COLOUR OPTIONS >](#)



DRIVETRAIN

- Direct Injection 3.5 Litre, V6 Engine with 278 hp @ 6000 rpm & 265 lb.ft. of Torque @ 4600 rpm
- Variable Valve Timing with Intelligence, Sequential Multiport Electronic Fuel Injection
- One-Touch Part Time 4WD with Electronically Controlled Transfer Case, Automatic Limited Slip Differential
- 6-Speed, Automatic
- Multi-Leaf Spring Rear Suspension
- Power-Assisted, 4-Wheel Ventilated Disc Brakes
- Combined City & Highway Rating 11.8 L/100 km 24 mpg⁸

ENTERTAINMENT & CONNECTIVITY

- 7" Touch Screen, 6-Speakers
- Apple CarPlay^{TM1} Compatibility
- Android Auto^{TM1} Compatibility
- USB Input Ports, Auxiliary Input Jack, Bluetooth®
- 4.2" TFT Multi-Information Display, Backup Camera

INTERIOR

- Fabric Seat Material
- 4 Seat Capacity
- Dual Zone Automatic Climate Control
- Heated Front Bucket Seats
- Manual 4-Way Adjustable Driver's Seat with Lumbar Support
- Rear Seats with Fold-Up Seat Cushions
- Manual Slide Rear Window, Rear Privacy Glass

EXTERIOR

- 6-Foot Cargo Bed
- Cab Mounted Brake Light with Integrated Red Lamp
- Dual Colour-Keyed, Heated, Power Adjustable Side View Mirrors
- Black Front Grille, Colour-Keyed Rear Bumper
- Colour-Keyed Fender Flares
- Double Wall Cargo Bed, Composite (SMC) Cargo Bed
- Cargo Bed Tie-Downs, Tie-Down Cleats (Set of 4)
- Easy Lower & Lift Tailgate, Removable Locking Tailgate
- Tail Lamps with Red Housing
- Headlamps with Auto On/Off Features
- 16" Steel Wheels & P245/75R16 All-Season Tires

SAFETY

- Toyota Safety SenseTM (TSS-P)
- Star Safety SystemTM
- 8 Airbags

[Click to Build & Price](#)

[Click to Compare Models](#)

[Click for Table of Contents](#)

North London Toyota
519-451-3880

OPTIONAL

SR5 PACKAGE

- Audio Plus¹ – includes Safety Connect® (1-year trial)
- 8" Touch Screen
- SiriusXM® Satellite Radio with 3-month All-Access trial
- SR5 Grade Fabric Seat Material
- Power Adjustable Driver Seat
- Leather-Wrapped Steering Wheel
- Black Front Grille with Chrome Surround
- LED Daytime Running Lights, Fog Lamps
- 16" Aluminum Alloy Wheels & P245/75R16 All-Season Tires

TRD SPORT PACKAGE

- Plus SR5 Package
- Premium Audio with Remote¹ – includes Embedded Navigation, Destination Assist (1-year trial), Remote Connect (1-year trial), Service Connect (10-year trial)
- Short Range Key Fob Remote Start
- Sport Fabric Seats
- Off Road Body Kit, TRD Decals
- Sport-Tuned Suspension
- Hood Scoop
- Colour-Keyed Exterior
- Black Front Grille
- 17" Aluminum Alloy Wheels & P265/70R17 All-Terrain Tires
- Smart Key System with Push Button Start

TRD SPORT PREMIUM PACKAGE

- Plus TRD Sport Package
- Premium Leather Seat Surfaces
- Power Tilt & Slide Moonroof
- Qi Wireless Charging
- Blind Spot Monitor with Rear Cross-Traffic Alert

[Click to Build & Price](#)

[Click to Compare Models](#)

[Click for Table of Contents](#)

North London Toyota
519-451-3880

SR

DOUBLE CAB - REGULAR BED



EXTERIOR COLOURS⁷ | [CLICK VEHICLE FOR COLOUR OPTIONS >](#)



DRIVETRAIN

- Direct Injection 3.5 Litre, V6 Engine with 278 hp @ 6000 rpm & 265 lb.ft. of Torque @ 4600 rpm
- Variable Valve Timing with Intelligence, Sequential Multiport Electronic Fuel Injection
- One-Touch Part Time 4WD with Electronically Controlled Transfer Case, Automatic Limited Slip Differential
- 6-Speed, Automatic
- Multi-Leaf Spring Rear Suspension
- Power-Assisted, 4-Wheel Ventilated Disc Brakes
- Combined City & Highway Rating 11.9 L/100 km 24 mpg⁸

ENTERTAINMENT & CONNECTIVITY

- 7" Touch Screen, 6-Speakers
- Apple CarPlay™¹ Compatibility
- Android Auto™¹ Compatibility
- USB Input Ports, Auxiliary Input Jack, Bluetooth®
- 4.2" TFT Multi-Information Display, Backup Camera

INTERIOR

- Fabric Seat Material
- 5 Seat Capacity
- Dual Zone Automatic Climate Control
- Heated Front Bucket Seats
- Manual 4-Way Adjustable Driver's Seat with Lumbar Support
- Rear Seats with Fold-Up Seat Cushions
- Manual Slide Rear Window, Rear Privacy Glass

EXTERIOR

- 6-Foot Cargo Bed
- Cab Mounted Brake Light
- Dual Colour-Keyed, Heated, Power Adjustable Side View Mirrors
- Black Front Grille, Colour-Keyed Rear Bumper
- Colour-Keyed Fender Flares
- Double Wall Cargo Bed, Composite (SMC) Cargo Bed
- Cargo Bed Tie-Downs, Tie-Down Cleats (Set of 4)
- Easy Lower & Lift Tailgate, Removable Locking Tailgate
- Tail Lamps with Red Housing
- Headlamps with Auto On/Off Features
- 16" Steel Wheels & P245/75R16 All-Season Tires

SAFETY

- Toyota Safety Sense™ (TSS-P)
- Star Safety System™
- 8 Airbags

[Click to Build & Price](#)

[Click to Compare Models](#)

[Click for Table of Contents](#)

North London Toyota
519-451-3880

OPTIONAL

SR5 PACKAGE

- Audio Plus¹ – includes Safety Connect® (1-year trial)
- 8" Touch Screen
- SiriusXM® Satellite Radio with 3-month All-Access trial
- SR5 Grade Fabric Seat Material
- Power Adjustable Driver Seat
- Leather-Wrapped Steering Wheel
- Black Front Grille with Chrome Surround
- LED Daytime Running Lights, Fog Lamps
- 16" Aluminum Alloy Wheels & P245/75R16 All-Season Tires

TRD SPORT PACKAGE

- Plus SR5 Package
- Premium Audio with Remote¹ – includes Embedded Navigation, Destination Assist (1-year trial), Remote Connect (1-year trial), Service Connect (10-year trial)
- Short Range Key Fob Remote Start
- Sport Fabric Seats
- Off Road Body Kit, TRD Decals
- Sport-Tuned Suspension
- Hood Scoop
- Colour-Keyed Exterior
- Black Front Grille
- 17" Aluminum Alloy Wheels & P265/70R17 All-Terrain Tires
- Smart Key System with Push Button Start

TRD SPORT PREMIUM PACKAGE

- Plus TRD Sport Package
- Premium Leather Seat Surfaces
- Power Tilt & Slide Moonroof
- Qi Wireless Charging
- Blind Spot Monitor with Rear Cross-Traffic Alert

[Click to Build & Price](#)

[Click to Compare Models](#)

[Click for Table of Contents](#)

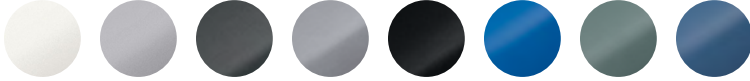
North London Toyota
519-451-3880

TRAIL

DOUBLE CAB - SHORT BED



EXTERIOR COLOURS⁷ | [CLICK VEHICLE FOR COLOUR OPTIONS >](#)



DRIVETRAIN

- Variable Valve Timing with Intelligence, Sequential Multiport Electronic Fuel Injection
- One-Touch Part Time 4WD with 2-Speed Electronically Controlled Transfer Case, Automatic Limited Slip Differential
- 6-Speed, Automatic
- Super Electronically Controlled Transmission, Lock-Up Torque Converter
- Power-Assisted, 4-Wheel Ventilated Disc Brakes
- Front & Rear Bilstein Shock Absorbers
- 4-Wheel Crawl Control, Multi-Terrain Select

ENTERTAINMENT & CONNECTIVITY

- Audio Plus¹ – includes Safety Connect[®] (1-year trial)
- 8" Touch Screen
- Apple CarPlay^{TM1} Compatibility
- Android Auto^{TM1} Compatibility
- SiriusXM[®] Satellite Radio with 3-month All-Access trial
- USB Input Ports, Auxiliary Input Jack, Bluetooth[®]
- 4.2" TFT Multi-Information Display, Backup Camera

INTERIOR

- Trail Grade Fabric Seats
- 5 Seat Capacity
- Dual Zone Automatic Climate Control
- Heated Front Bucket Seats
- Power 8-Way Adjustable Driver's Seat
- 60/40 Split Rear Bench Seat with Fold-Up Seat Cushions
- Unique Interior Accents

EXTERIOR

- 5.1-Foot Cargo Bed
- Black Badge Covers
- Predator Side Step Bars
- Fuel Tank & Transfer Case Protector Plate
- Easy Lower & Lift Tailgate, Removable Locking Tailgate
- Fog Lamps, Halogen Headlamps, LED Daytime Running Lights
- 16" Off Road Dark Grey Machined Wheels & P245/75R16 All-Season Tires

SAFETY

- Toyota Safety SenseTM (TSS-P)
- Star Safety SystemTM
- 8 Airbags

[Click to Build & Price](#)

[Click for Table of Contents](#)

North London Toyota
519-451-3880

OPTIONAL

TRD OFF ROAD PACKAGE

- Premium Audio with Remote¹ – includes Embedded Navigation, Destination Assist (1-year trial), Remote Connect (1-year trial), Service Connect (10-year trial)
- Short Range Key Fob Remote Start
- Front & Rear Bilstein Shock Absorbers
- Off Road Body Kit, TRD Decals
- Class IV Towing Hitch Receiver, 7-Pin Connector, 4-Wheel Crawl Control, Multi-Terrain Select
- 16" Rugged Aluminum Alloy Wheels & P265/70R16 All-Terrain Tires
- Smart Key System with Push Button Start

TRD OFF ROAD PREMIUM PACKAGE

- Plus TRD Off Road Package
- Premium Leather Seat Surfaces
- Power Tilt & Slide Moonroof
- Multi-Terrain View Monitor
- Qi Wireless Charging
- Blind Spot Monitor with Rear Cross-Traffic Alert

TRD PRO PACKAGE

- Plus TRD Off Road Premium Package
- JBL® Audio
- TRD PRO Leather Seat Surfaces
- TRD PRO Tuned Off Road Suspension with FOX® Shocks with Rear Remote Reservoirs, TRD Tuned Front Coil Springs & Rear Leaf Springs
- TRD PRO Shift Knob, Power Tilt & Slide Moonroof, TRD PRO Leather Seats, TRD PRO Carpet Floor Mats, TRD PRO Badges, TRD PRO Stainless Steel Exhaust, TRD Centre Cap, TRD PRO Skid Plate
- Heritage "TOYOTA" Front Grille
- LED Headlamps, Rigid Industries Fog Lamps
- 16" TRD PRO Aluminum Alloy Wheels

[Click to Build & Price](#)

[Click for Table of Contents](#)

North London Toyota
519-451-3880

TRD SPORT PREMIUM

DOUBLE CAB - SHORT BED



EXTERIOR COLOURS⁷ | [CLICK VEHICLE FOR COLOUR OPTIONS >](#)



Adds to or replaces features offered on Trail

DRIVETRAIN

- 6-Speed, Manual, Super Electronically Controlled Transmission, Lock-Up Torque Converter
- Sport-Tuned Suspension
- Combined City & Highway Rating 12.7 L/100 km 25 mpg⁸

ENTERTAINMENT & CONNECTIVITY

- Premium Audio¹ - includes Embedded Navigation, Destination Assist (1-year trial)
- Qi Wireless Charging

INTERIOR

- Leather Seat Surfaces

EXTERIOR

- Power Tilt & Slide Moonroof
- Dual, Heated, Power Adjustable Side View Mirrors
- Hood Scoop
- 120 Volt (400 Watt) Cargo Bed AC Power Outlet
- Class IV Towing Hitch Receiver, 7-Pin Connector
- 16" Aluminum Alloy Wheels & P245/75R16 All-Season Tires

SAFETY

- Blind Spot Monitor with Rear Cross-Traffic Alert

OPTIONAL

TRD PRO PACKAGE

- TRD PRO Leather Seat Surfaces
- TRD PRO Tuned Off Road Suspension with FOX® Shocks with Rear Remote Reservoirs, TRD Tuned Front Coil Springs & Rear Leaf Springs
- TRD PRO Shift Knob, Power Tilt & Slide Moonroof, TRD PRO Leather Seats, TRD PRO Carpet Floor Mats, TRD PRO Badges, TRD PRO Stainless Steel Exhaust, TRD Centre Cap, TRD PRO Skid Plate
- Heritage "TOYOTA" Front Grille
- LED Headlamps, Rigid Industries Fog Lamps
- 16" TRD PRO Aluminum Alloy Wheels & 265/70R16 All-Season Tires
- Combined City & Highway Rating 12.9 L/100 km 22 mpg⁸

[Click to Build & Price](#)

[Click to Compare Models](#)

[Click for Table of Contents](#)

North London Toyota
519-451-3880

NIGHTSHADE

DOUBLE CAB - SHORT BED



EXTERIOR COLOURS⁷ | [CLICK VEHICLE FOR COLOUR OPTIONS >](#)



Adds to or replaces features offered on Trail

DRIVETRAIN

- Combined City & Highway Rating 11.8 L/100 km 24 mpg⁸

ENTERTAINMENT & CONNECTIVITY

- JBL® Audio
- Bird's-Eye-View Monitor
- Premium Audio with Remote¹: includes embedded navigation, Destination Assist (1-year trial), Remote Connect (1-year), Service Connect (10-year trial)
- Short Range Key Fob Remote Start
- Wireless Charging

INTERIOR

- Premium Leather Seats Surface
- Power 8-Way Adjustable Driver's Seat
- 60/40 Split Rear Bench Seat with Fold-Up Seat Cushions
- Unique Interior Accents
- Moonroof

EXTERIOR

- Black Mirror Cap & Door Handles
- Black Grille Surround
- Black Badging
- Black Chrome Tailgate Inserts
- Black Exhaust Tip
- Black Lug Nuts & Wheel Locks
- LED Headlamps & Fog Lamps
- Black 18" Aluminum Alloy Wheels & P265/60R18 All-Season Tires

SAFETY

- Intelligent Clearance Sonar
- Smart Key System with Push Button Start
- Blind Spot Monitor with Rear Cross-Traffic Alert

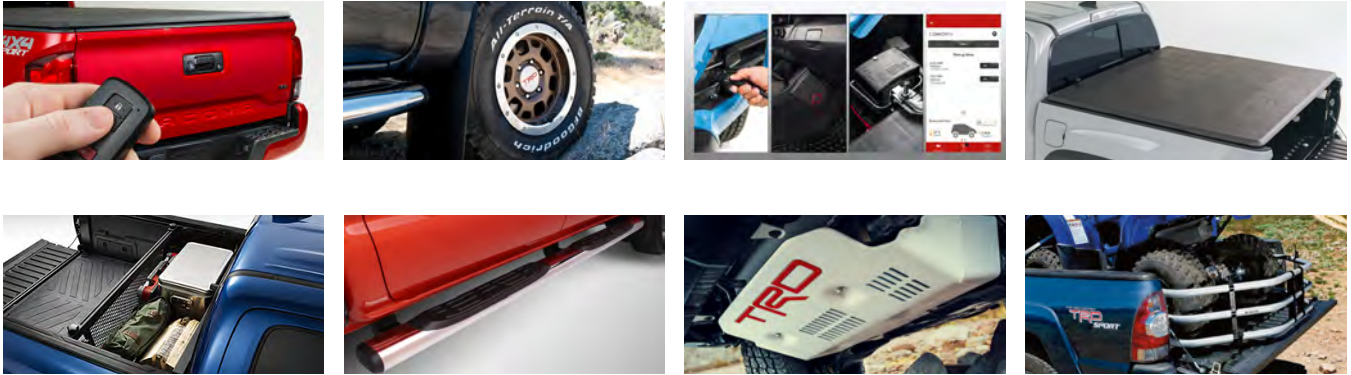
[Click to Build & Price](#)

[Click to Compare Models](#)

[Click for Table of Contents](#)

North London Toyota
519-451-3880

Toyota Genuine Accessories are custom designed and engineered to fit your specific Toyota vehicle and are backed by a Toyota Warranty.



TRD ACCESSORIES

- TRD 16" Off-Road Beadlock - Style Alloy Wheels - Bronze
- TRD Front Skid Plate
- TRD Performance Air Filter
- TRD Performance Air Intake System
- TRD Performance Exhaust System
- TRD Performance Exhaust with Black Chrome Exhaust Tip
- TRD Shift Knob

INTERIOR

- START+ Long Range Remote Engine Starter
- Toyota Genuine Dash Camera
- Tub Style All-Season Floor Mats
- Universal Tablet Holder

EXTERIOR

- Battery Trickle Charger
- Bed Cleat
- Bed Divider
- Bed Extender
- Bed Lighting
- Bed Mat
- Black Tailgate Insert Badge
- Blackout Badges
- Cargo Box - Cooler Box Left
- Cargo Box - Storage Box Right
- Cargo Net
- Chrome Tailgate Insert Badge
- D-Ring
- Door Cup Protection Film - Set of four
- Exhaust Tip - Black Chrome
- Exhaust Tip - Stainless Steel
- Hard Tri-Fold Tonneau Cover

- Hood Graphic
- LED Fog Light Kit - Chrome or Black
- Oval Tube Steps - 5-inch Black
- Power Tailgate Lock
- Predator Tube Step
- Premium Plug-In Block Heater
- Pro Series Paint Protection Film
- Rear Bumper Step
- Running Boards
- Side Step Bars - 4-inch Chrome
- Side Step Bars - 5-inch Chrome
- Soft Tri-Fold Tonneau Cover
- Spare Tire Lock
- Towing Hitch Ball 2" or 2 5/16"

COMFORT+ PACKAGES

- **COMFORT+:** Battery Trickle Charger, Bluetooth® App

**Block Heater Required (SOLD SEPARATELY, if not already installed on vehicle)*

- **COMFORT+ Enhanced:** Battery Trickle Charger, Bluetooth® App, Cabin Warmer, Power Cables

- **COMFORT+ Complete:** Battery Trickle Charger, Bluetooth® App, Cabin Warmer

**Block Heater Required (SOLD SEPARATELY, if not already installed on vehicle)*

To protect your investment and provide additional peace of mind, every new Toyota vehicle includes a comprehensive Warranty and Roadside Assistance package.

COMPREHENSIVE COVERAGE

This warranty includes 24-hour Roadside Assistance and other benefits, as well as coverage of repairs on any part of the vehicle that is defective in material or workmanship under normal use and maintenance. Different warranties apply to original tires.

3
YEARS
OR
60,000 KM

POWERTRAIN COMPONENTS

This warranty covers repairs to powertrain components that are defective in material or workmanship under normal use and maintenance.

5
YEARS
OR
100,000 KM

MAJOR EMISSION CONTROL COMPONENTS

This warranty covers repairs to specified major emission components that are defective in material or workmanship under normal use and maintenance.

8
YEARS
OR
160,000 KM

CORROSION PERFORATION

This warranty covers any sheet metal found, under normal use, to have developed a perforation from corrosion due to defects in material or workmanship.

5
YEARS
OR
UNLIMITED
DISTANCE

— D I S C L A I M E R S —

(1) Driving while distracted can result in loss of vehicle control. Some features may be locked out while the vehicle is in gear. To reduce risk of accident while driving, exercise care when using the systems (even with the voice commands) and obey all local laws concerning use of the systems while driving (as some laws prohibit the use of electronic devices while operating a vehicle). Once the Connected Services by Toyota trial subscription expires, paid enrollment is required. Apple CarPlay, iPhone and Siri are trademarks of Apple Inc. Android Auto and Google Assistant are trademarks of Google LLC. A compatible customer phone pairing is required and customers are responsible for all data charges. (2) Drivers should always be responsible for their own safe driving. Please always pay attention to your surroundings and drive safely. Depending on the conditions of roads, vehicles, weather, etc., the TSS systems may not work as intended. (3) Dynamic Radar Cruise Control is designed to assist the driver and is not a collision-avoidance system or a substitute for safe and attentive driving practices. System effectiveness depends on many factors such as weather, traffic and road conditions. (4) Lane Departure Alert with Steering Assist is designed to read lane markers under certain conditions and provide visual and audible alerts and slight steering force when lane departure is detected. It is not a collision-avoidance system or a substitute for safe and attentive driving. (5) The TSS Pre-Collision System is designed to help avoid or reduce the impact speed and damage in certain frontal collisions only. The Pedestrian Detection system is designed to detect a pedestrian ahead of the vehicle, determine if impact is imminent and help reduce impact speed. It is not a substitute for safe and attentive driving. System effectiveness depends on many factors, such as speed, size and position of pedestrians, driver input and weather, light and road conditions. (6) Automatic High Beam system operates at speeds above approximately 34 km/h. Factors such as a dirty windshield, variable weather, lighting conditions and hilly terrain will limit effectiveness, requiring the driver to manually turn it off. (7) Not all exterior and interior colour options are available for every model. (8) Fuel efficiency estimates were determined using approved Government of Canada Test Methods. Actual fuel consumption will vary based on driving habits and other factors.

Details on the above features can be found in the Owner's Manual or contact your local Toyota Dealer.

Toyota Canada Inc. Every effort has been made to ensure the specifications and equipment shown are accurate based on information available at time of publication. In some cases, certain changes in production capacity, standard equipment, options or product delays may occur which would not be reflected in this brochure. Toyota Canada Inc. reserves the right to make these changes without notice or obligation. The Toyota website **toyota.ca** – or your Toyota Dealer is your best source for up-to-date information.

